



# FANREP

Volume 3, Issue 1

January - July 2007



## From the FANREP President

Dear FANREP Members,

As we launch into the New Year for 2007 it also begins FANREP's fifth year as a professional organization and as a chapter of the National Association of Natural Resource Extension Professionals (ANREP) since 2002. I am thrilled to be a part of this evolving association and represent you as your President. The organization remains strong in memberships, awards, and environmental leadership throughout Florida.

For the upcoming year we have many exciting things happening. FANREP's District Directors will seek members within their area to highlight one of their natural resource programs to be shared with everyone on the FANREP web site. In addition, FANREP will be updating the look of the web site to be complementary to the "Solutions For Your Life" web site. I encourage members to contact me with any suggestions or ideas to build and strengthen our web site. You can reach me at [marella@ufl.edu](mailto:marella@ufl.edu) and at (305)421-4017. At this time, you can find the latest minutes to our meetings and view the committee and members of these working groups on our web site.

Also keep in mind, FANREP is here to help you enhance your professional career. We have scholarships available if you need assistance in attending professional meetings such as Extension Professionals of Florida (EPAF) annual meeting.

I want to thank everyone for their dedication to this growing organization and I look forward to seeing you at future FANREP events.

### Inside this issue:

**Demonstrating Extension Excellence: FANREP Awards** 2

*Fostering Sustainable Behavior* 2

*Officers and Committees 2006-07* 3

*News From the Field* 4

- Lee County
- Palm Beach County
- Hillsborough County

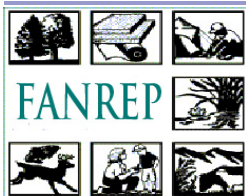
*Upcoming Events* 6

## Share Your Work with Fellow FANREP Members

In an effort to get to know each other better and to encourage more program sharing, we have added a new section to the newsletter titled "News From the Field." In this issue we highlight ongoing efforts in Hillsborough, Palm Beach, and Lee counties. If you would like to share your work with other FANREP members please submit a brief article to one of the following Newsletter Committee Members: Alyssa Dodd ([ADodd@ufl.edu](mailto:ADodd@ufl.edu)), Roy Beckford ([FBeck@ufl.edu](mailto:FBeck@ufl.edu)), Rob Northrop ([Northrop@ufl.edu](mailto:Northrop@ufl.edu)).

### FANREP Newsletter Committee:

Alyssa Dodd, Chair  
 Roy Beckford  
 Rob Northrop



## FANREP

### Awards Submission Deadline:

**March 2, 2007**

Send nominations via mail  
(only Web Page nominations sent  
via e-mail) to:

Ken Gioeli

St. Lucie County Extension

8400 Picos Road, Ste 101

Fort Pierce, FL 34945

Phone (772) 462-1660

## Demonstrating Extension Excellence: FANREP Awards Program

The FANREP Awards Program fosters high standards among its members and helps expand the use of high quality, innovative educational materials and programs by honoring the outstanding members and partners who developed them.

All awards will be presented at the Association of Florida Extension Professionals (EPAF) Conference in September. Award winners also will be announced on the FANREP web page.

*Please Note:* Entries will not be automatically entered in the national ANREP awards competition. For information about the national awards program, please go to <http://www.anrep.org>

**DEADLINE FOR SUBMITTING NOMINATIONS AND EDUCATIONAL MATERIALS is March 2, 2007. Judges must received materials by this date.**

Questions about this program can be directed to the FANREP Awards Program Committee:

- Mary Campbell
- Leroy Creswell
- JP Gellerman
- Ken Gioeli

### Award Categories:

- Early Career Leadership Award
- Career Leadership Award
- Individual Program Leadership Award
- Innovative Program Award

### Creative Works Awards Program Categories:

- Promotional Materials
- Short Publication
- Long Publication
- Newsletter
- Series of Articles
- Slide Set/Computerized Graphic Presentation
- Radio
- Video/Video Disk
- Television/Videoconference
- Computer Software/Application
- Web Page
- Mixed Materials

For complete awards information visit FANREP on the web at:

<http://anrep.ifas.ufl.edu/Awards%20Program/fanrepawardprograms.htm>

## Fostering Sustainable Behavior

Several FANREP members participated in the "Fostering Sustainable Behaviors" training offered in Gainesville this past January. The workshop introduced faculty to the concept of community-based social marketing. Research shows that information campaigns that emphasize enhancing knowledge or altering attitudes frequently have little or no effect upon behavior.

Community-based social

marketing is an alternative to information intensive campaigns. This approach involves identifying barriers to a sustainable behavior, designing a strategy that utilizes behavior change tools, piloting the strategy with a small segment of a community, and finally, evaluating the impact of the program once it has been implemented across a community.

To learn more, view articles and case studies on the web at:



<http://cbsm.com>

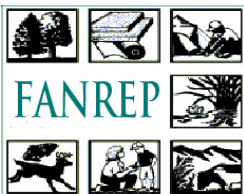
## Officers and Committees 2006-07



**We're on the Web:  
anrep.ifas.ufl.edu**

Board Position	October 2006- September 2007
<b>OFFICERS</b>	
President	Marella Bradway, <a href="mailto:marella@ufl.edu">marella@ufl.edu</a>
President Elect	Andrew Diller, <a href="mailto:apdiller@ufl.edu">apdiller@ufl.edu</a>
Secretary	Jennifer Seitz, <a href="mailto:jacohen@ufl.edu">jacohen@ufl.edu</a>
Treasurer	Scott Jackson, <a href="mailto:lsj@ufl.edu">lsj@ufl.edu</a>
Past President	Maia McGuire, <a href="mailto:mpmcg@ufl.edu">mpmcg@ufl.edu</a>
ANREP Southern Regional Representative	Will Sheftall, <a href="mailto:WilliamS@mail.co.leon.fl.us">WilliamS@mail.co.leon.fl.us</a>
<b>DISTRICT DIRECTORS</b>	
District 1 (Northwest)	Shelia Dunning, <a href="mailto:sdunning@ifas.ufl.edu">sdunning@ifas.ufl.edu</a>
District 2 (Northeast)	Rebecca Jordi, <a href="mailto:RLJordi@ifas.ufl.edu">RLJordi@ifas.ufl.edu</a>
District 3 (Central)	David Griffis, <a href="mailto:dgriffis@ufl.edu">dgriffis@ufl.edu</a>
District 4 (South Central)	Tom Becker, <a href="mailto:tbecker@leegov.com">tbecker@leegov.com</a>
District 5 (South)	Alyssa Dodd, <a href="mailto:adodd@ufl.edu">adodd@ufl.edu</a>

COMMITTEE	CHAIR	MEMBERS
<b>Nomination</b>	Joan Bradshaw, <a href="mailto:jbradsh@ifas.ufl.edu">jbradsh@ifas.ufl.edu</a>	Debbe Hooper, Doug Gregory
<b>Scholarship</b>	Chris Simoniello, <a href="mailto:simo@marine.usf.edu">simo@marine.usf.edu</a>	Bryan Fluech
<b>Newsletter</b>	Alyssa Dodd, <a href="mailto:adodd@ufl.edu">adodd@ufl.edu</a>	Rob Northrop, Roy Beckford
<b>Awards</b>	Ken Gioeli, <a href="mailto:ktgioeli@ifas.ufl.edu">ktgioeli@ifas.ufl.edu</a>	JP Gellerman, Mary Campbell, LeRoy Creswell
<b>Abstract</b>	Andrew Diller, <a href="mailto:apdiller@ufl.edu">apdiller@ufl.edu</a>	Alyssa Dodd, Tom Becker, Brian Cameron, LeRoy Creswell, Jessica Sullivan
<b>Membership</b>	Joan Bradshaw, <a href="mailto:jbradsha@ifas.ufl.edu">jbradsha@ifas.ufl.edu</a>	Eleanor Foerste, Mary Campbell, Doug Gregory
<b>Technology/Website</b>	Scott Jackson, <a href="mailto:lsj@ufl.edu">lsj@ufl.edu</a>	Andrew Diller, Doug Gregory
<b>2007 Florida Association of Counties</b>	JP Gellerman, <a href="mailto:jpgeller@ufl.edu">jpgeller@ufl.edu</a> Debbe Hooper, <a href="mailto:debbe.hooper@bocc.citrus.fl.us">debbe.hooper@bocc.citrus.fl.us</a> Sheila Dunning, <a href="mailto:sdunning@ifas.ufl.edu">sdunning@ifas.ufl.edu</a> Bryan Fluech <a href="mailto:fluech@ufl.edu">fluech@ufl.edu</a>	
<b>Audit</b>	Scott Jackson, <a href="mailto:lsj@ufl.edu">lsj@ufl.edu</a>	Joan Bradshaw, Will Sheftall



# NEWS FROM THE FIELD

## LEE COUNTY: Increasing Awareness of Africanized Bees

Ever since 'Africanized' bees escaped from scientists in Brazil in 1957, they have moved steadily up through Central America, finally reaching the United States in the late 1980's. Since then, attacks have been reported in California, Arizona and Texas and human deaths have been associated with attack incidents. Florida has since reported several sightings, and attacks on humans and animals have been documented.

In December 2006, a sample of bees from Lee County was identified as "Africanized". This ID was made by the Bureau of Plant and Apiary Inspection located in Gainesville. Reports about highly agitated bees which sting in large numbers have been received in Lee County, and in one incident on January 8, 2007, a man was hospitalized for multiple stings.

'Africanized' bees are easily agitated and will attack quicker and in far greater numbers than the common European honey-bees. One male 'Africanized' drone bee mating with a queen European bee will change the temperament of an entire European hive. This change in temperament is indicated by an increased propensity to defend their hive.

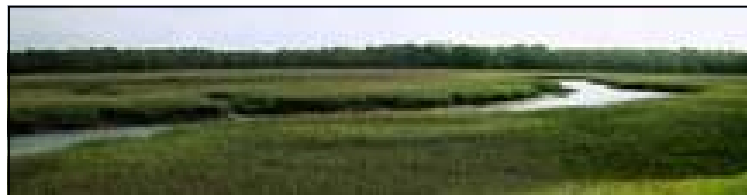
Lee County Extension is currently conducting awareness seminars, working in conjunction with The Bureau of Plant and Apiary Inspection, University of Florida's Insect Identification Laboratory, as well as local interest groups to educate and inform residents, and equally important, to devise and adopt strategies to protect the local apiary industry.



Photo courtesy of [www.uni.uiuc.edu](http://www.uni.uiuc.edu)

For more information contact Roy Beckford, Agriculture and Natural Resources Extension Agent, UF/IFAS Lee County Extension, [fbeckford@leegov.com](mailto:fbeckford@leegov.com).

## PALM BEACH COUNTY: Increasing Knowledge of Natural Resource Issues



Palm Beach County Extension is offering a continuing education course on *Natural Resource Issues Facing South Florida*. This course is designed for interested citizens who enjoy learning about natural resource issues in a fun and discussion oriented classroom.

Each two hour class (offered once a week over a 6 week period) is devoted to a specific natural resource topic. Participants interact with guest speakers (primarily UF/IFAS faculty), explore local case studies, and participate in class

discussions. Topics include:

- Overview of South Florida
- Lake Okeechobee
- Everglades
- Invasive Species
- Sustainable Agriculture
- Endangered Species

The course was offered for the first time in 2006 reaching fifteen participants. Evaluation results indicate participant knowledge increased by at least 20% per topic

area. The greatest knowledge increases (more than 35%) occurred during the Lake Okeechobee and Everglades classes.

This course is currently being offered in February/March 2007. A *Part II* course is planned for April/May covering additional topics such as Water Quantity and Habitat Fragmentation. For more information please contact Alyssa Dodd, Agriculture and Natural Resources Extension Agent, UF/IFAS Palm Beach County Extension, [ADodd@ifas.ufl.edu](mailto:ADodd@ifas.ufl.edu).

# NEWS FROM THE FIELD



## HILLSBOROUGH COUNTY: Creating a Scientific Framework for Forest Ecosystem Assessment and Management

The University of Florida IFAS Extension in Hillsborough County is leading an effort to create a scientific framework for the ecological assessment and sustainable management of the Tampa Bay watershed's trees and forested ecosystems along the urban – wildland continuum. The ecological knowledge generated will support educational and community-based activities, and interactions within the Tampa Bay Watershed.

A Forest Working Group was initially organized (2006) to identify strategies for creating the framework, and to build consensus and teamwork between those agencies that are charged with forest conservation within the watershed. The Forest Working Group currently consists of managers and scientists from federal, state and local government agencies, the Tampa Bay Estuary Program, the Southwest Florida Water Management District, the University of South Florida and the University of Florida.

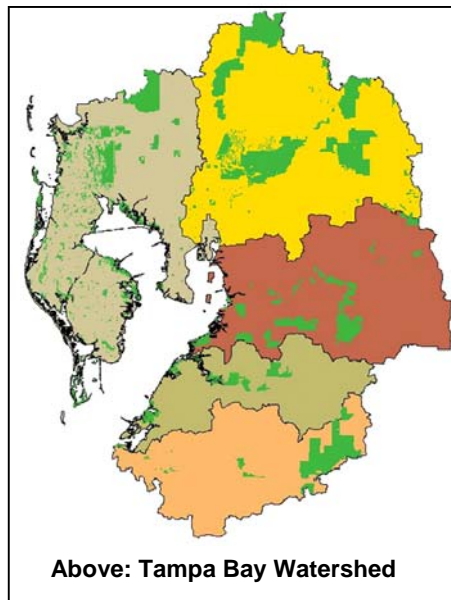
### Forest Working Group Goals

1. Understand the Tampa Bay watershed trees and forest as an ecological system. The program will bring together researchers from the biological, physical, and social sciences to collect new data and synthesize existing information on how both the ecological and engineered systems of Tampa Bay watershed work.

2. Understand how the Tampa Bay watershed trees and forest ecosystems change over time

3. Use the ecological knowledge created to help support educational and community-based activities.

Interactions between the project and the watershed's communities are an important component of the project. Such an integrative project includes many disciplines and many research and educational institutions, both in the watershed and beyond.



4. The Tampa Bay watershed forest ecosystem framework has a special opportunity to both contribute to and examine ecological management and decision-making practices at a range of geographic scales. There can and should be a dynamic interplay between the intellectual pursuit of ecological understanding and the development of ecological literacy and ecologically sound practices in the watershed. The general public, students and teachers, and various policy-makers and environmental managers all have a stake in the outcome of such an endeavor.

### Preliminary Objectives

Assemble baseline information and analysis on the forest (including woodlands, and urban forests) to:

- Raise awareness of the ecological, economic, and social importance of Tampa Bay's watershed forests
- Understand and monitor the forest spatial distribution trends
- Understand and monitor the forest species composition and condition
- Quantify the value of forest to ecological, social and economic systems in the watershed
- Determine the drivers to change in the forest systems
- Determine the impacts of these changes to the forests (ecological, economic)
- Develop strategies for sustainable management and conservation of these forests

### Initial Steps

- A symposium on urban forest inventory systems (December 2006);
- A detailed ecological assessment of the trees and woodlands within the City of Tampa, and all sub-watersheds contiguous to the city's jurisdictional boundary (underway);
- Preparation of a comprehensive review of the trees and forests within the Tampa Bay Watershed (State of the Forest – Tampa Bay Watershed, underway).

### For More Information

Please contact Rob Northrop, Urban and Community Forester, UF/IFAS Hillsborough County Extension, [Northrop@ufl.edu](mailto:Northrop@ufl.edu)



## Upcoming Events Calendar

### Selected UF/IFAS Trainings

To learn more and to register visit: <http://pitds.ifas.ufl.edu>

February 21-23	Practical Training in the use of GIS
February 27-28	Changing Roles: Wildlands-Urban interface
March 15	Lawn and Landscape Research Update
March 20-21	Nutrient/Water Quality - Land Use Information Tools
April 16	Native Wildflower Seed Production - Panhandle
February 20-22	Biofuels
April 10-11	Agricultural and Urban Storm Water Management in FL



**Mark Your  
Calendars!**

### Natural Areas Training Academy

To learn more and to register visit: <http://nata.snre.ufl.edu/registration.htm>

February 26-March 3	Vegetation Monitoring in a Management Context
March 13-15	Working Across Boundaries to Protect Ecosystems
April 24-26	Managing Visitors and Volunteers in Natural Areas
May 22-24	Plant Communities of the Florida Panhandle

### Selected Florida Conferences

March 15-18	<b>League of Environmental Educators in Florida Conference</b> <a href="http://leeflet.brinkster.net/">http://leeflet.brinkster.net/</a>	West Palm Beach
March 16	<b>6th Annual Environmental Ethics Conference</b> <a href="http://www.fau.edu/environment/">http://www.fau.edu/environment/</a>	Ft. Lauderdale
April 14-17	<b>Florida Water Resources Conference</b> <a href="http://www.fwrc.org/">http://www.fwrc.org/</a>	Orlando
April 22 -25	<b>National Association of Environmental Professionals</b> <a href="http://www.naep.org/">http://www.naep.org/</a>	Orlando
May 9-11	<b>Climate Change Conference</b> <a href="http://www.ces.fau.edu/cc/index.php">http://www.ces.fau.edu/cc/index.php</a>	Tampa
May 14-18	<b>2007 Aquatic Weed Control Short Course</b> <a href="http://conference.ifas.ufl.edu/aw/index.html">http://conference.ifas.ufl.edu/aw/index.html</a>	Coral Springs
May 15-17	<b>World Environmental and Water Resources Congress</b> <a href="http://content.asce.org/conferences/ewri2007/">http://content.asce.org/conferences/ewri2007/</a>	Tampa
June 20-22	<b>Applied Management of Conservation Lands In Florida</b> <a href="http://www.ces.fau.edu/amclif/">http://www.ces.fau.edu/amclif/</a>	Orlando